

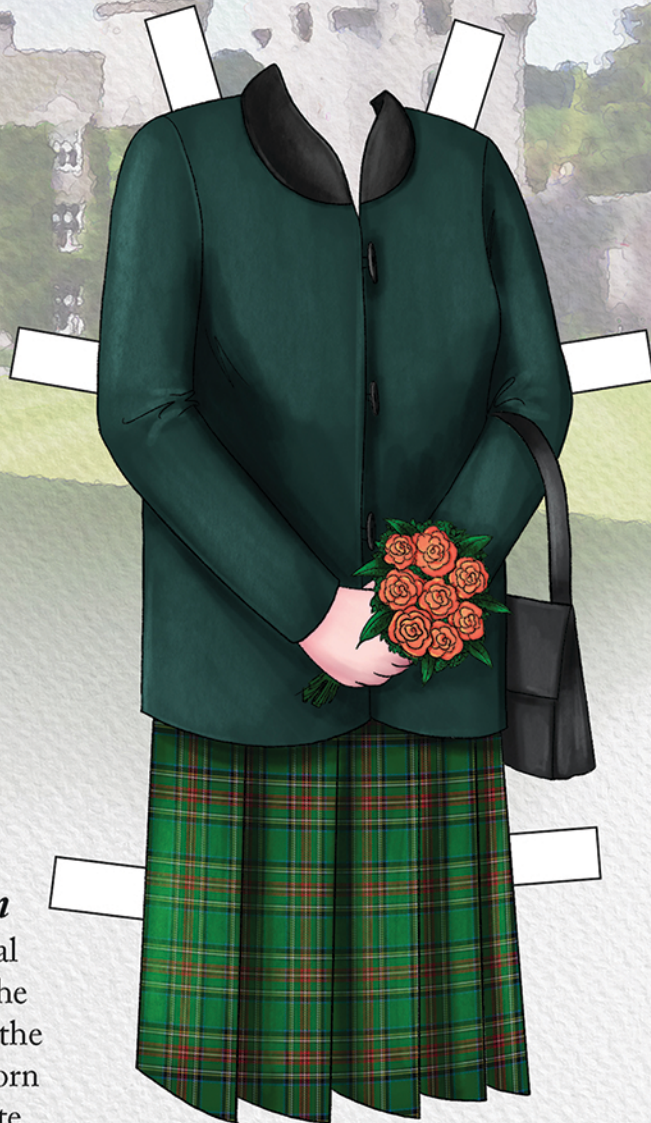
QUEEN ELIZABETH II

AT BALMORAL CASTLE



Balmoral Tartan

Exclusive to the Royal Family and Piper to the Sovereign. Since 1936 the tartan has also been worn by the Balmoral Estate Pipers. It is said to have been designed by Prince Albert, husband of Queen Victoria. Queen Elizabeth wore this during her final public appearance.



King George VI (Green Stewart)

Created specifically for King George VI, Queen Elizabeth's father. Exclusive to the Royal Family.